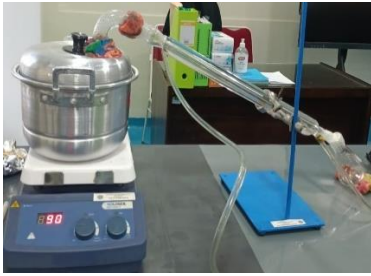
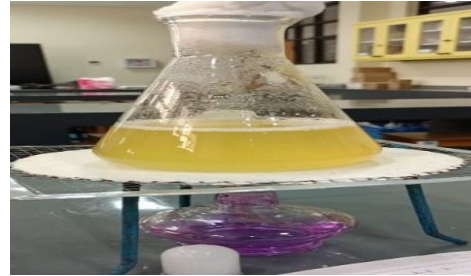


Tahap ekstraksi metode kukus



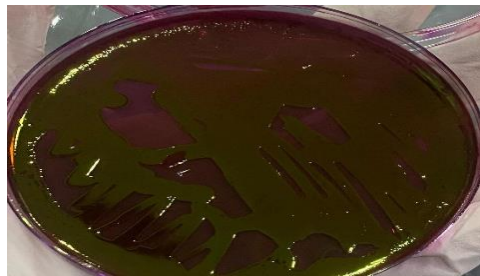
Pembuatan media pertumbuhan bakteri



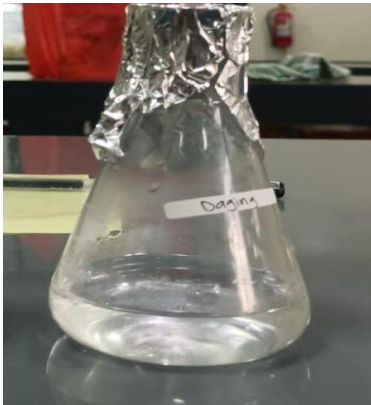
Peremajaan bakteri pada media Na



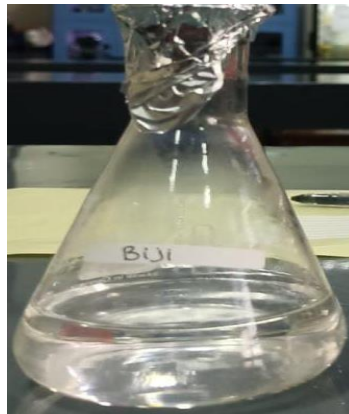
Pertumbuhan bakteri di media selektif EMB



Ekstrak kukus daging labu kuning
\\



Ekstrak kukus biji labu kuning



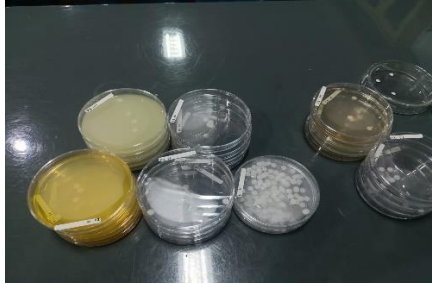
Ekstrak infusa daging labu kuning



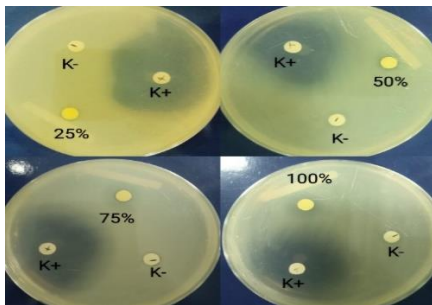
Ekstrak infusa biji labu kuning



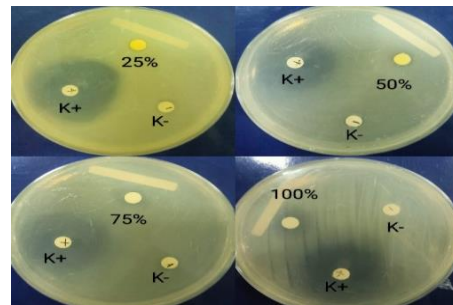
Pembuatan konsentrasi ekstrak dan kelompok kontrol



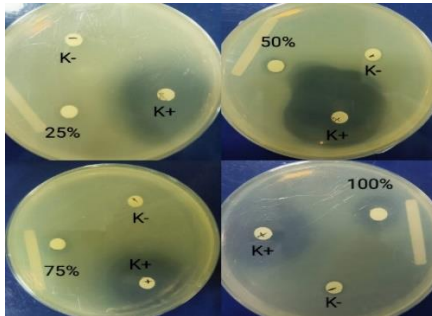
Daya hambat ekstrak kukus daging labu kuning



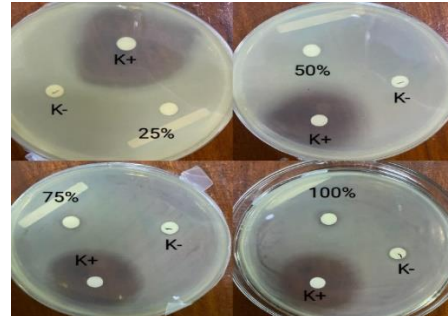
Daya hambat ekstrak kukus biji labu kuning



Daya hambat ekstrak infusa daging labu kuning



Daya hambat ekstrak infusa biji labu kuning



Pengukuran zona hambat

